



Built-in (trench) convector
with heating and cooling
options

FPKV-HC 13/30

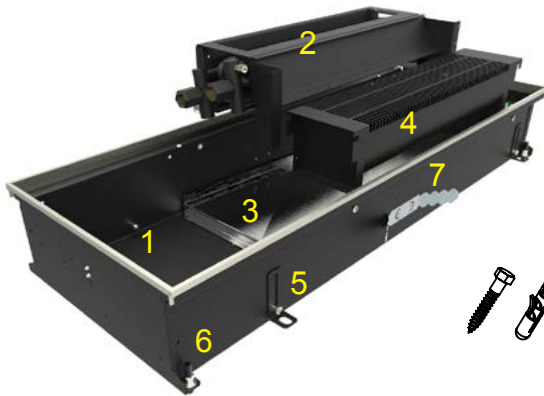
Assembly instruction



Content:

- Package content
- Assembly instructions
- Drill scheme

Scheme I. - Assembly parts



1	Convector body
2	Exchanger
3	Drain basein
4	Tangential Fan
5	Floor anchors
6	Levelling screw
7	Fixator

Additional elements:



2 bolt + wall plug

1 pc Allen key



Installation instructions:

1. Place convector on the installation spot (exchanger close to the window, fan towards the room). Mark holes for fixing anchors (4) - scheme II.

2. Put wall plugs inside drilled holes.

3. Level the body of convector on preliminary height (the precise level will be achieved in the step no.7). Install supply pipes, drain for condensation and electrical wiring.

4. Provide the leak tests on all three pipes!!!

5. Fix the concrete anchors to the floor.

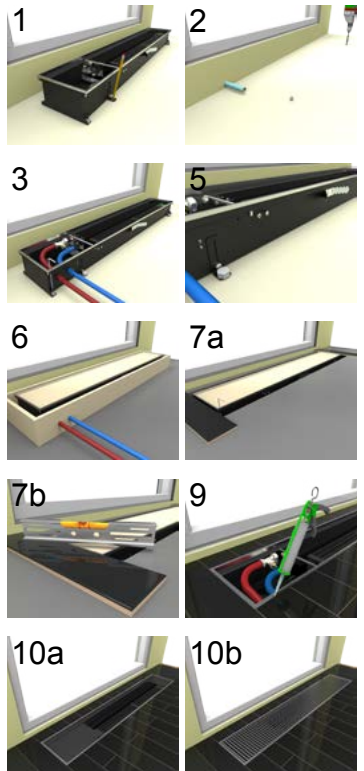
6. Rise up the casing around convector (5cm distance) and cover convector body with protective board - scheme III.

7. Install one piece of final floor surface close to the convector (wooden floor, floor tile) and level convector to the precise height. Fix concrete anchors (4) to the body of convector so that you protect the convector from displacement!!!

8. Fill the installation gap with technical foam or concrete to the necessary level.

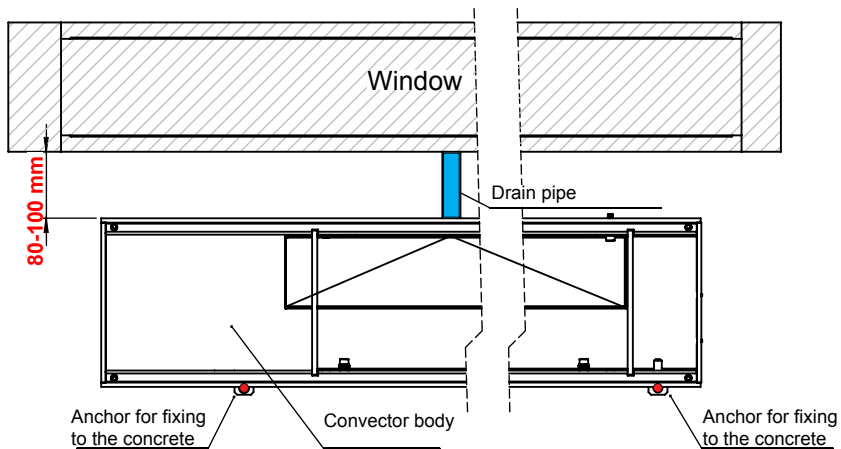
9. After the final flooring is finished fill the gap between convector and the floor material with silicon paste or other sealing material.

10. Place end-body covers and grill on top of convector (the grill has to be ordered separately).

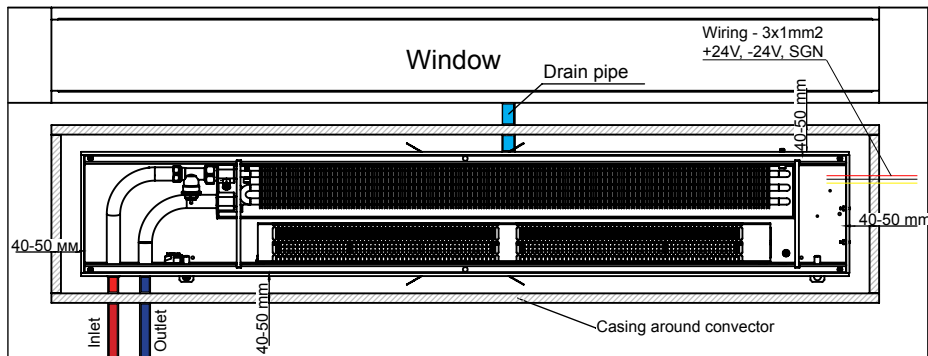


FIDUKS
h e a t i n g & c o o l i n g

Scheme II. - Positioning of convector



Scheme III. - Connecting to the heating system



Dimensions and positions of installation slots and openings

